

Sex and Death at Covent Garden

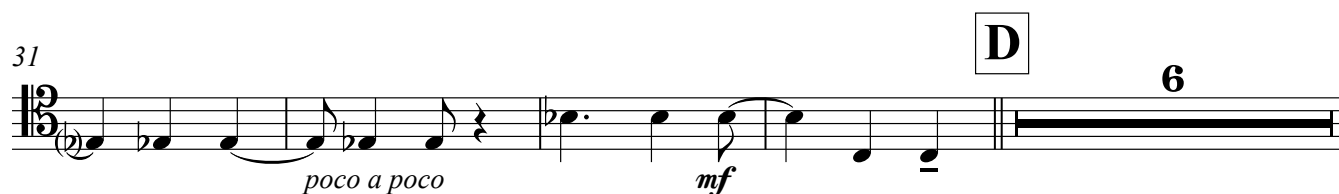
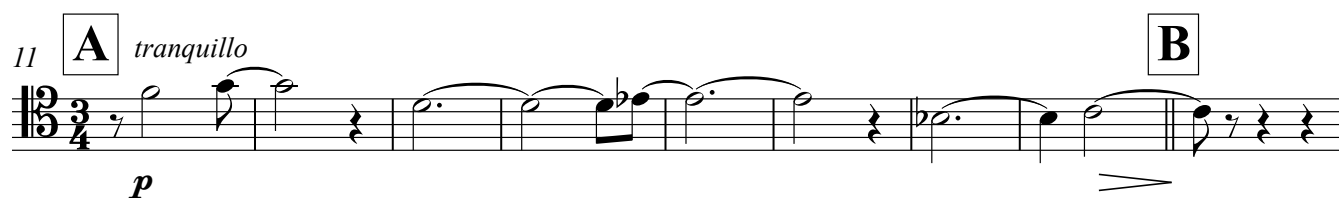
1. Intrada

Charlie Barber

Lento

♩ = 60

cantabile



Charlie Barber - Sex & Death at Covent Garden
Violoncello 1

41

mf *cresc.* *f*

49

dim. *p* *p* *E* *con sord.*

56

p *Rit.* *Attacca* *mute out*

2. Recitative + Aria

♩ = 116

63

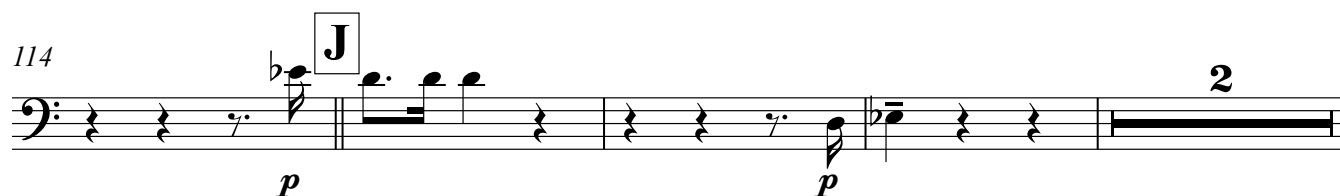
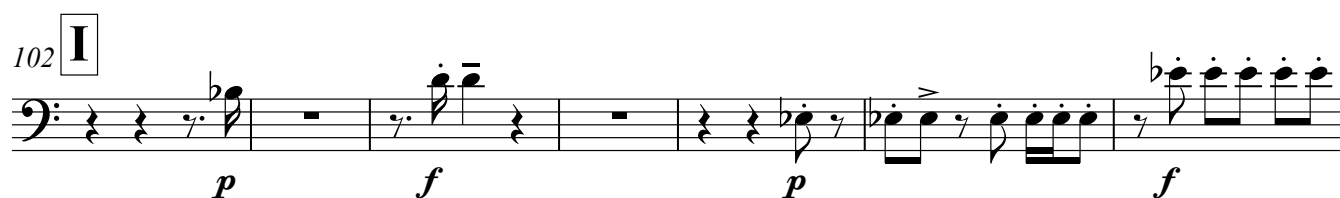
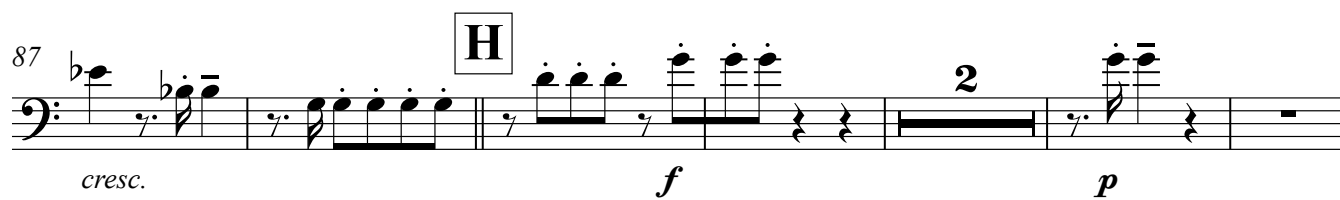
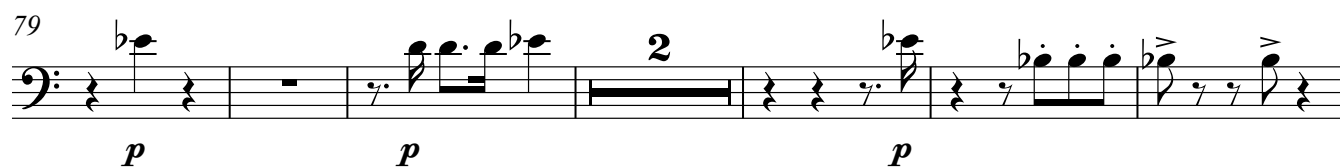
p *senza sord.* *f* *p*

70

p *f* *p* *G*

Charlie Barber - Sex & Death at Covent Garden
Violoncello 1

3



Charlie Barber - Sex & Death at Covent Garden

4

Violoncello 1

K

120

p *pp* *p* *cresc.* *mf*

129

p *mf*

135

p *mf*

140

f *mf*

145

f

151

f *p*

M

156

f *p* *mf*

161

f *p* *cresc.*

N

166

f *p* *mp*

171

f *p*

O

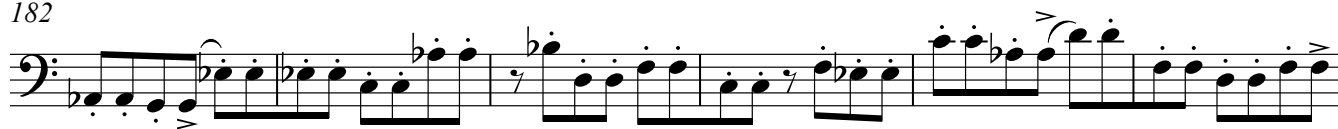
177

mf *cresc.* *f*

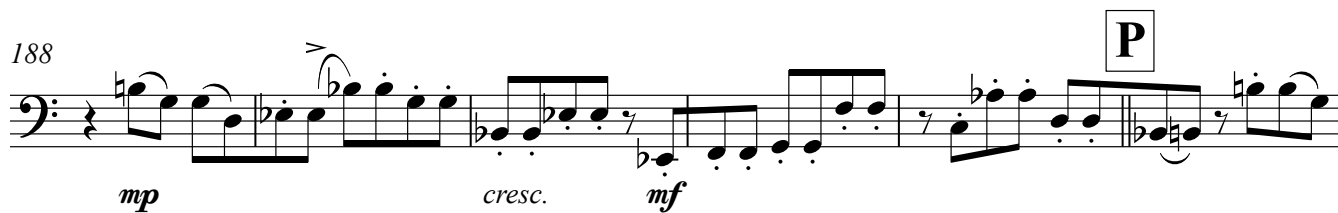
Charlie Barber - Sex & Death at Covent Garden
Violoncello 1

5

182



188



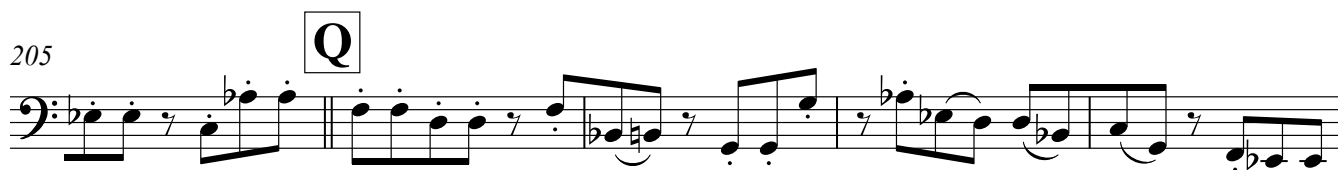
194



199



205



210



216



221



227

Attacca



3. Allegro

♩ = 132

233 **S**

f

240

mf

9

254

f

6

mf

f

265 **T**

pp

270

p

275

cresc.

280

mf

284

f

2

289 **U**

mp *mf* *f*

297

mf *f*

305 **V**

p *cresc.* *f* *p* *f* *p*

311

mf *p*

321

mf *f* *p* *cresc.*

328 **W**

f *mf*

344 **X**

f *mf* *sf*

Charlie Barber - Sex & Death at Covent Garden
Violoncello 1

8

353



360



366



373 Y



379



386



390



395 **Z**



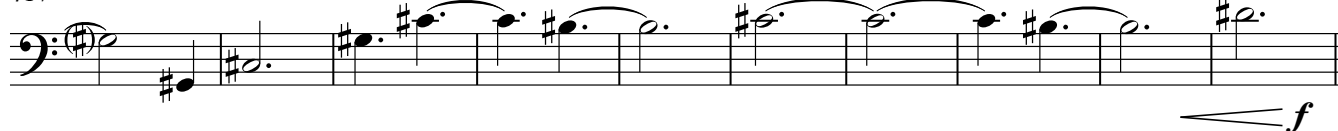
402



409



417



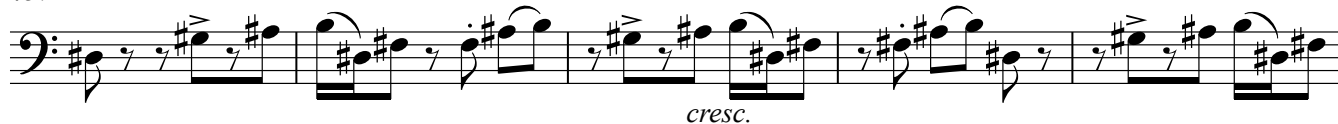
427 **AA**



432



437



442



446



Charlie Barber - Sex & Death at Covent Garden

Violoncello 1

10

451 **BB**

p

459

467 **CC**

f marc.

473

479 **DD**

f

486

sf sf sf f

494

f ff

503

p f

4. Cadenza

Adagio

$\text{♩} = 60$

509 **EE**

pp sub. *mf*

520

525

f

530

mf *dim.*

535 **Rall.**

mp *p* *pp* *a niente*